

## Block 76 – Rachel Rossi

### General instructions :

The measurements given for cutting include seam allowances of 7 mm ( $\frac{1}{4}$ "), rounded to 15 mm ( $\frac{1}{2}$ ") for two seams. Make any necessary adjustments.

The measurements in the explanatory diagrams do not include seam allowances, except for those diagrams that specify "\*Seam allowances included".

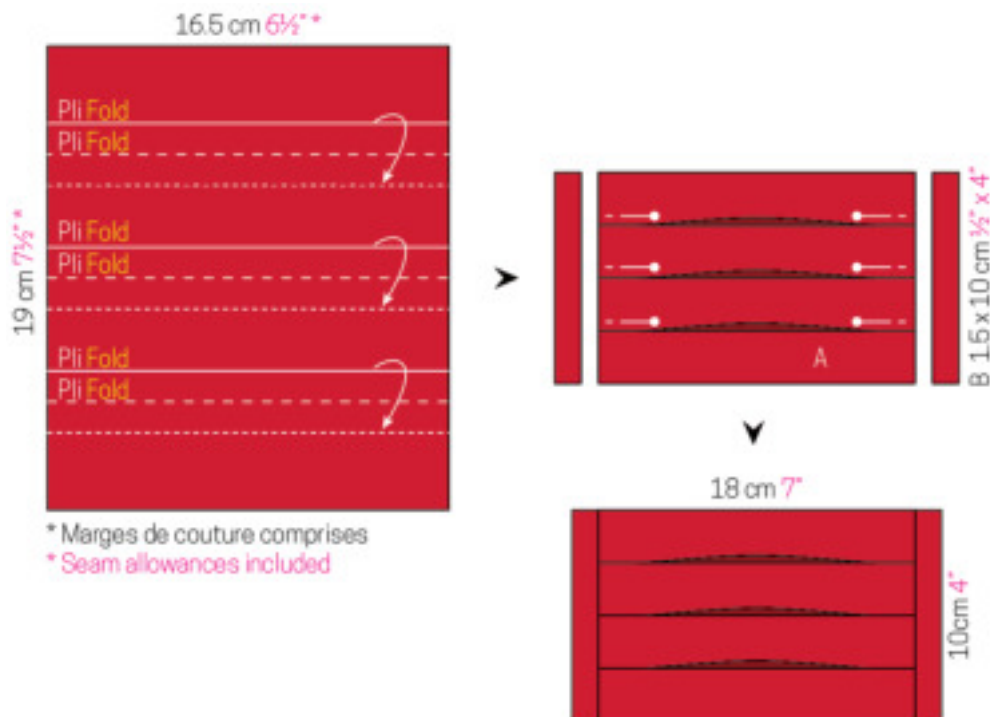
### Cutting :

- From one red fabric, cut the following:
  - one 16.5 x 19 cm ( $6\frac{1}{2}$ " x  $7\frac{1}{2}$ " ) rectangle, to yield **one A piece**
  - two 3 x 11.5 cm ( $1$ " x  $4\frac{1}{2}$ " ) B rectangles
- From one grey fabric:
  - four 3 x 9 cm ( $1$ " x  $3\frac{1}{2}$ " ) C rectangles
- From one pink fabric:
  - two 9 x 16.5 cm ( $3\frac{1}{2}$ " x  $6\frac{1}{2}$ " ) D rectangles
  - two 5 x 26.5 cm ( $2$ " x  $10\frac{1}{2}$ " ) E strips

### Assembly :

**Diagram 1:** Transfer the various reference marks from the template onto the right side of the rectangle of red fabric. Make the folds, pleating the fabric along the dotted-line markings. Pin to hold the folds in place.

Stitch one B rectangle to either side to obtain the centre part of your block.



# QUILTmania

**Diagram 2:** Stitch one C rectangle to either side of each D rectangle. Stitch these units to the top and bottom of the previous unit. Complete your block by adding one E strip to either side.

