

Block 53 – Carole Massard

General instructions :

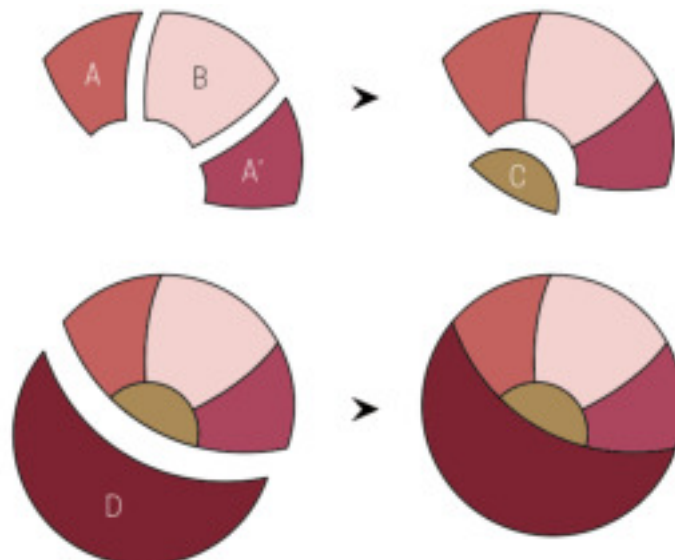
The measurements given for cutting include seam allowances of 7 mm ($\frac{1}{4}$ "), rounded to 15 mm ($\frac{1}{4}$ ") for two seams. Make any necessary adjustments. The measurements in the explanatory diagrams do not include seam allowances, except for those diagrams that specify "*Seam allowances included". For the templates, add a seam allowance of 7 mm ($\frac{1}{4}$ ") all around.

Cutting :

- From an assortment of fabrics with large motifs, cut the following:
 - one A piece and one A' piece (reverse template A)
 - one B piece
 - one C piece
 - one D piece
 - two E pieces and two E' pieces
 - two F pieces
 - two G pieces
 - two H pieces
- From one ecru fabric for the background:
 - one 27.5 cm (11") l square; extra fabric is allowed when cutting to facilitate working the appliqués

Assembly :

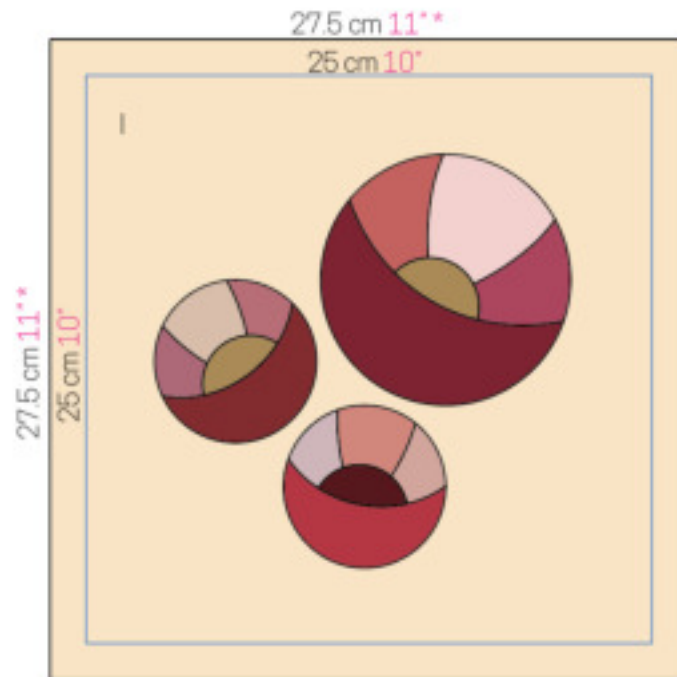
Diagram 1: Stitch the A piece and the A' piece to either side of the B piece. Appliqué the C piece to the bottom of this unit, using the traditional method as follows: turn your seam allowance to the back, working small invisible stitches. You will obtain one large rose.



QUILTmania

Diagram 2: In the same way, stitch the E, E', F, G and H pieces to obtain two small roses.

Mark one 25 x 25 cm (10" x 10") square on the right side of the I square. Using a light source, transfer the motif outlines and appliqué your roses, using the reference marks.



* Marges de couture comprises

* Seam allowances included

Diagram 3: Recut the appliqué block to 26.5 x 26.5 cm (10¹/₂" x 10¹/₂"), seam allowances included.

